

SPLIT NOTES

Harrogate Band Newsletter

December 1990

Issue #3

Welcome

We had hoped to publish this issue of *Split Notes* earlier in the summer, but a lack of contributions, holidays, etc. all conspired against it - however, here it is. Again we issue a plea for contributions to the next issue - any topic would be acceptable, your news, views, anecdotes, memories - anything about the Band, its activities or personnel, or about banding in general. Pass on your copy or ideas to any Committee member.

Personnel

We have had several changes of playing personnel over the last few months. The following new members have joined the Band: Michael Dawes, Sally Drinkwater, Darren Fellows, Sarah Leng, Steven Morland, Edward Prince and Ross Simpson. Ross has since started a course at Salford College, but continues to play with us when he can. Sadly, we have also lost some players - Catherine Greenwood and Rebecca Watts who have gone on to further education in Oxford and London; Alan Telford who has moved to Carlisle, and Jim Coward, Charles Grainger and Ken Warburton. The loss of these last three has left us without a 2nd Baritone and two Bases (Eb & BBb). This is a serious disadvantage to the Band and we would ask all Members that, if you know of anyone who could be persuaded to join the Band to replace them, to let the Committee know as soon as possible.

Sponsorship/Support

We have continued to attempt to attract potential sponsors for the Band, but without success to date. A donation of £50 was received from one firm however. We were delighted to accept two donations to the Band from Geoffrey Tombs, the brother of Frank Tombs - our late President. One of these was the funds for our new Band Banner and its accessories, and the other was a very generous cash donation.

Contesting

National Championships in London - a very good result was achieved, 7th out of 31 bands. We could have done better, with hindsight and with the benefit of the adjudicator's remarks, but nonetheless the Band can be proud of its achievement.

We have also achieved very good results in two open contests at Hardraw Scar (7th overall and beating all other 4th & 3rd section bands) and more recently in Malton (3rd overall - beating a 3rd, a 2nd and a Championship section band into lower places!)

We are especially indebted to Peter Wells for his dedicated work in preparing the Band for these contests, often having to contend with poor attendance at rehearsals, even immediately prior to contests.

Brass Band Associations

Harrogate Band is currently a member of the British Federation of Brass Bands (BFBB), the Yorkshire & Humberside Brass Band Association (YHBBA - formerly the York & District BBA), and the Bradford and District Brass Band Association (BDBBA). The BFBB endeavours to act as the representative body to guide, advise and regulate the activities of the brass band movement in the UK. About 19 Associations, out of 26 in the UK, belong to the BFBB, representing around 820 bands.

We enjoy the benefits of BFBB membership through our membership of the YHBBA who, at their AGM, elect a representative to attend the meetings - the BDBBA is not a member of the BFBB. The two local associations we belong to are both healthy organisations managed by delegates nominated by the member bands. Their main, but by no means sole, function is to promote and organize their own annual contests and others, often on behalf of local authorities (eg. Malton, Bridlington, Hardraw Scar etc.) Representatives from both serve on the Northern and Yorkshire Regional Committees constituted by Boosey & Hawkes Ltd to organise the Regional Qualifying Contests for the finals of the British Brass Band Championships of Great Britain, and also to regulate the National Gratings of their member bands, which are based solely on results obtained in the qualifying contest.

Our delegate on both associations has for some years been John Hallums. His service with the YHBBA (71 bands) has resulted in his election, for the past two years, to their "Committee of Four" which, with the Association's officers, has the power to deal with urgent matters arising between delegate meetings. He is also currently Vice-chairman of the BDBBA delegate meeting.

The delegate meetings are usually monthly - YHBBA at the York Railway Institute on Saturday afternoons (Sept. to May), and BDBBA at the Wibsey Band Room on Monday evenings (Sept. to June). More than one delegate per band is welcome to attend, but only one may vote. John usually manages to attend the meetings on our behalf, but has not been able to find a deputy from our Committee on those occasions when he was not available. However, if any member of the Band would like to accompany John, and/or act as his deputy when the need arises, do let him know.

Some other organisations associated with brass bands are:

BRITISH BRASS BAND REGISTRY - which exists to regularise and control the playing membership of individual brass bands.
Every player who is a member of a contesting band must be registered, and with only one band at a time.

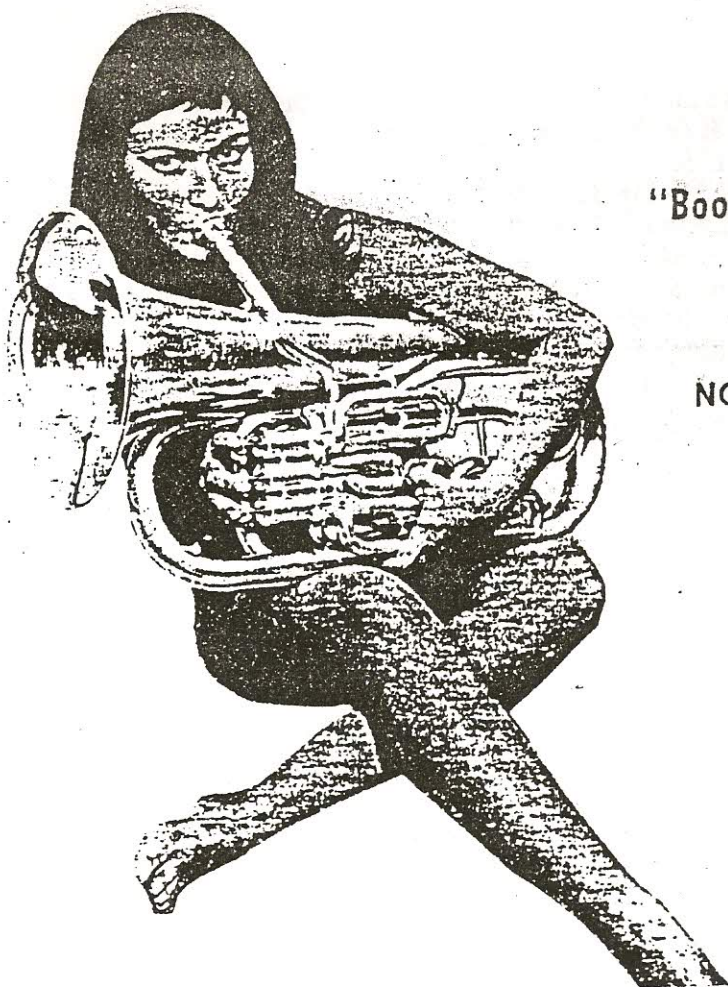
NATIONAL ASSOCIATION OF BRASS BAND CONDUCTORS

BANDSMAN'S COLLEGE OF MUSIC

AMATEUR MUSIC ASSOCIATION

Harrogate Band Administration

President	--
Chairman	Gavin Holman (Tel: 866454)
Secretary	Les Mackown (Tel: 562580)
Treasurer	Ian Bristow
Musical Director	Peter Wells
Assistant MD	Ian Davey
Bandmaster	John Lofthouse
Librarian	Geoff Grant
Committee	Tony Carter, John Hallums, Dave Pye, Bob Roper



"Boosey & Hawkes (Retail) Ltd.

can supply you with this model.

NO the Euphonium NOT the Girl".

(1972 advertisment!)

Under the Baton

What makes a good performing musician? Natural talent, good teaching, the right equipment - yes - but above all, PRACTICE. Whilst all playing is practice, there is no doubt that all musicians benefit from effective, individual practice as the means of increasing personal confidence and proficiency.

One of my first bandmasters used to say "Ten minutes a day for the band". He believed that this level of personal work would ensure the maintenance of skills, but not their improvement. With some individuals this may be correct, for others not so - on some days it's all we can manage. There is no doubt that a regular schedule of "warm ups" covering breath control, tonguing and lip exercises is essential - throughout the range of the instrument.

Geoff Whitham, writing in the British Bandsman some years ago, said that the basis of his technique was long note practice. Similar opinions were held by Bert Sullivan when teaching Bob Childs. Long notes with graded crescendos and diminuendos can be of enormous help with breath control and in getting to know an instrument. I recommend attention to long note work as part of YOUR practice.

We should not forget that brass playing is a very physical activity. We all know the difference even slight illness can make to our playing. It follows that being overweight is an unnecessary impediment to our health and playing, and as for brass players who smoke...!

Peter Wells

Yet More Books on Bands

A Practical Guide To Brass Band Instrumentation - Siebert,E - Studio Music - 1982
Brass Band Annual 1990 - Newsome,R (ed) - 1990
Challenging Brass - Newcombe,SP - 1980
Directory of British Brass Bands (vol. 5) - BFBB - 1988/89
How To Arrange For Brass Bands - Carver,PB - Keith Prowse Ltd - 1939
Limusics - Pitfield,T - Studio Music - 1984
Music Through The Brass Band - Cook,K - Hinrichsen - 1953
Scoring For Brass Band - Wright,D - John Baker - 1935(1967)
The Bandsman's Diary - Egon Publishing - (annually)
The Brass Band Conductor - Wright,D - Duckworth - 1948
The Complete Bandmaster - Wright,D - Pergamon Press - 1963
The Story Of The National - British Bandsman - 1971
The Tuba Family - Bevan,C - Faber & Faber - 1981
You & Your Band - Walmsley,T - 1986

Brass Band Journals

BRITISH BANDSMAN
BRITISH MOUTHPIECE
THE CONDUCTOR
BRASS BULLETIN (European, & brass rather than brass band)
BRASS BAND WORLD (monthly - to be published in February 1991)

Conduct

Players are encouraged to take music home to practice - but it is essential that it is available for use by the Band when you are absent. You must ensure that music is either left in the Band Room or returned via another member whenever you cannot attend a rehearsal or engagement. Rehearsals are too often disrupted by missing music.

Please indicate on the engagement sheets your availability or otherwise as early as possible. Too often we have to chase players to gain some idea of the expected turn-out.

If you have to miss a rehearsal, please ensure that the Bandmaster or Musical Director is aware of your absence well in advance - and mark your planned absences on the chart!

What's On

We are hoping to arrange some concerts between January and March, possibly in local churches. We have also quoted for concerts in parks in Leeds for the summer and also in various seaside resorts. Our usual regular engagements have yet to be confirmed.

Tue 29 January	Newspaper Society Dinner - Crown Hotel
Sun 16 March	Area Contest - Darlington
Sun 28 April	Shildon Contest
Sun 5 May	YHBBA Contest - Scunthorpe
Sat 13 July	Dishforth Fete

Germany

Our trip this year to West Germany was a great success. We played a number of concerts in various locations in and around Bad Hersfeld, including our first concert in the DDR at Bad Salzungen. Our friends from the Sport & Musikverein hosted us very well. We broke our return journey at Bocholt on the Dutch border, where we enjoyed the hospitality of the town and its people, playing two concerts in the town itself. There are no plans yet for future overseas visits or return visits by SMV, but one of the music groups in Bocholt, the BoKaGe Big Band hopes to visit their twin town Rossendale in October next year and to visit Harrogate one day to play a concert.



Tuba built for
JP Sousa

Performing Rights

The Copyright Act states that you may not perform copyright music in public without the permission of the copyright holder. This requirement is waived if a licence from the Performing Rights Society (PRS) is obtained. These licences are usually issued to the proprietors of premises where performances are held, but Brass and Military Bands can be licenced separately to cover their performances which include outdoor engagements and concerts in non-licenced premises. Bands pay a "standard" fee, based on what type of band it is and its activities. The PRS distributes the fees it collects as royalties to the composers and publishers it represents (currently around 20,000 in the UK alone). To do this it needs to have details of the extent which any particular work has been performed in public. Since detailed returns are no longer provided by individual bands, these details are estimated by a sampling procedure organised through the British Federation of Brass Bands. Incidentally, 75% of PRS members - eg. composers - receive less than £250 per year from their royalties!

All-Star International Band

Musical Director	Don Follomi	Italy
Soprano	Willie Maykit	England
Solo Cornets	Andy Splitit	Scotland
	Manheim Stoned	Germany
	Peter Owt	Wales
Repiano	Ron Chord	Australia
2nd Cornets	Kenny Reed	USA
	Mal Function	Canada
3rd Cornets	Hugo First	Switzerland
	Stan Dupp	Belgium
Flugel	Len Miaquid	Mexico
Solo Horn	Mark Yaparts	Channel Isles
1st Horn	Ian Gee	Scotland
2nd Horn	Eamon Miss	N. Ireland
1st Baritone	Justin Tune	Isle of Man
2nd Baritone	Phil Algaps	USA
Euphoniums	Buster Gutt	USA
	Darryl Doonically	Eire
1st Trombone	Bengt Slide	Sweden
2nd Trombone	Mustaffa Go	Egypt
Bass Trombone	Worrel B. Next	Barbados
Eb Bases	Grant Angrone	Scotland
	Sheila Blige	Australia
Bb Bases	Oliver Guinness	N. Ireland
	Omar Papa	Sudan
Percussion	Tim Pani	Italy
	Zyle O'Fone	Eire
	Billy Bong	New Zealand
Security Officer	Oi U	China
Transport Manager	Dino DeWay	Italy
Band Manager	R.U. Verkin	Israel

Recent Recordings

Concerto	Black Dyke Mills	Chandos
Composer's Choice	Brighthouse & Rastrick	Harlequin
Brass from the Valleys	Cory	QPRL
Variations	Desford Colliery	Polyphonic
Continental Brass	Desford Colliery	DHM Records
Classic Brass	Grimethorpe Colliery	EMI
Pageantry	IMI Yorkshire Imperial	Polyphonic
Romance in Brass	Leyland DAF	Polyphonic
Freeh Way	Rigid Containers	Heavyweight
Hymns for Band & Organ	Royal Doulton	Bandleader
Puttin' On the Ritz	Sun Life	Hollick & Taylor
A Touch More Spice	William Davis Construction	Polyphonic
Tournament for Brass	Williams Faireys	Grasmere
Child's Play	Childs Brothers	Doyen
Euphonium Music	Childs Brothers	Doyen
Trombone Showcase Vol.2	Chris Jeans	Fantastique Music
Euphoria	Stephen Mead	SJM Music
Escapade (Solo Brass No.1)	Philip Smith	Heavyweight
Gala Concert	1989 National Championship	Heavyweight
Trittico for Brass Band	1989 European Championship	DHM Records

Character of Brass Band Players

MUSICAL DIRECTOR

Leaps tall bandrooms in one bound;
Is more powerful than a locomotive;
Is faster than a speeding bullet;
Walks on water; gives policy to God.

BAND CHAIRMAN

Leaps single-storey bandrooms in one bound;
Is about as powerful as a locomotive;
Is just as fast as a speeding bullet;
Walks on water if sea is calm;
Talks to God at set times of the day.

FRONT ROW CORNET PLAYERS

Leap small bandrooms with a running start;
Are almost as powerful as a locomotive;
Are noticeably slower than a speeding bullet;
Walk on water in an indoor swimming pool;
Talk to God if a special request is approved.

EUPHONIUM PLAYERS

Can barely clear a bicycle shed;
Always lose a tug-of-war with a locomotive;
Can fire a speeding bullet;
Swim well, and are occasionally addressed by God.

TROMBONE PLAYERS

Make high scratch marks when trying to leap bicycle sheds;
Are frequently run over by locomotives;
Can sometimes handle writing implements without injury;
Dog paddle, and talk to animals.

HORN PLAYERS

Run into bicycle sheds;
Recognise locomotives two times out of three;
Are not issued with writing implements;
Can stay afloat only with water wings & talk to walls.

BACK ROW CORNET & FLUGEL PLAYERS

Can't remember where the bandroom is;
Say "Look at the Choo-choo" when shown a locomotive;
Don't know what the other instruments are;
Think water's only use is for making beer;
Are occasionally spoken to by others.

BARITONE PLAYERS

Recognise a bandroom two times out of three;
Think a locomotive is a Bb Bass;
Have no idea what a speeding bullet is;
Are revolted by the mere thought of water;
Ask who is God?

BASS PLAYERS

Fall over doorstep when trying to enter bandroom;
Have on occasion tried to play a locomotive;
Should not be allowed near other instruments;
Will drown if given more than six inches of bath water;
Mumble to themselves.

PERCUSSIONISTS

Can barely read what has been written above;
Should be run down by a locomotive;
Failing that, shot by a speeding bullet;
They are the lowest form of life.

BANDMASTER

Lifts up bandrooms and walks under them;
Kicks locomotives off the tracks;
Catches speeding bullets between his teeth and eats them;
Freezes water with a single glance;
HE IS GOD.

BAND SECRETARY

Sweeps under bandrooms;
Puts locomotives back onto the tracks;
Picks up spent cartridges after bullets have been fired;
Carries the water to be frozen;
HE IS THE SON OF GOD.

HARROGATE BAND WORD SEARCH

Study the grid below and ring the 24 words that are hidden in it. Each word relates to the Band or brass bands in some way, and can be oriented vertically, horizontally, or diagonally, and may be reversed as well! For those that want help, the 24 words that are hidden are given below the grid.

L	Q	E	R	R	O	T	C	U	D	N	O	C	F
M	E	Z	W	G	K	E	D	O	E	A	S	I	E
D	N	N	B	A	N	N	E	R	N	T	L	S	T
A	R	B	O	H	A	O	M	X	J	T	U	U	O
G	O	A	Q	B	A	R	I	T	O	N	E	M	N
E	H	S	E	O	M	H	R	W	B	I	P	S	S
V	L	S	Y	C	N	O	N	A	I	P	E	R	T
B	E	T	A	G	O	R	R	A	H	B	A	N	W
I	G	K	C	O	R	N	E	T	H	C	T	I	P
Z	U	E	C	M	D	N	A	T	S	D	N	A	B
L	L	Y	R	E	E	E	P	R	T	H	I	X	A
O	F	W	M	U	I	N	O	H	P	U	E	R	T
S	E	P	E	R	C	U	S	S	I	O	N	B	O
H	D	K	W	N	O	R	G	J	I	T	S	E	N

- | | | | | | |
|------------|------------|-------|-------------|-----------|-----------|
| SOPRANO | NOTE | KEY | CORNET | BASS | BAND |
| TENOR HORN | PERCUSSION | LYRE | EUPHONIUM | BATON | BANDSTAND |
| TROMBONE | PITCH | MUSIC | FLUGEL HORN | CONDUCTOR | BANNER |
| TUNE | REPIANO | MUTE | HARROGATE | CONTEST | BARITONE |