

MIDLAND "RED"
MOTOR SERVICES.



OFFICIAL TIME TABLE
PRICE TWOPENCE.

CHIEF TRAVEL BUREAU: BULL RING, BIRMINGHAM.
Tel.: Midland 3887.

REGULAR AND RELIABLE DAILY SERVICES
To and from all Parts of the Midlands!

RIDE EVERY DAY THE
MIDLAND "RED" WAY

Express and Seaside Services Everywhere. Private Hire—Largest Fleet in the
Provinces. Our Representative will call on request with Itineraries and Advice.

O. C. POWER,
Traffic Manager.

CHIEF OFFICES: BEARWOOD, BIRMINGHAM.
Tel.: Bearwood 2020.

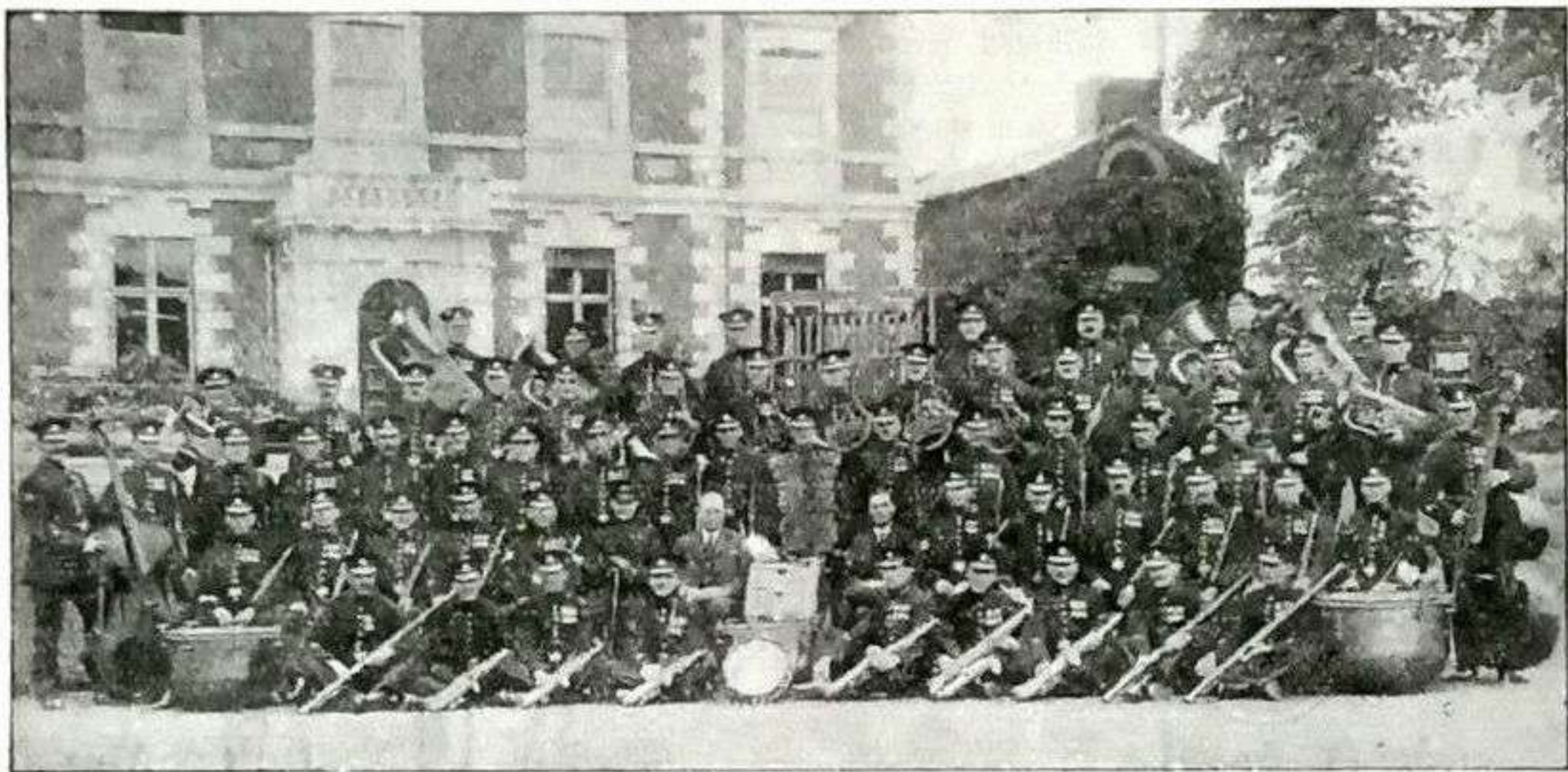
TAILBY MOTORS, LIMITED, *Motor Engineers*, BIRMINGHAM.

Phone: Central 4010 P.B.X.

Any make of car or lorry supplied. Deferred payments and part exchange
deals arranged. Repairs, Overhauls, Painting, Petrol, Oil, and Tyres.

DISTRIBUTORS FOR BIRMINGHAM AND DISTRICT OF CITROEN 35-CWT. COMMERCIAL VEHICLES.
Showroom, Garage, and Workshops: 91, CHARLOTTE STREET. GARAGING: 1/- for 12 hours.

Birmingham City Police Band Programme, 1930



Director of Music: RICHARD WASSELL.

[Photo by Hudson Studios, Ltd.]

SEE THE
NAME

CADBURY

ON EVERY
PIECE OF
CHOCOLATE

George Phillips (Cutlers), Ltd.,

The Cutlery & Plate Specialists
(Own Plating).

E.P. SPOONS & FORKS—Fiddle or Old English.

	Tables.	Desserts.	Teas.
A1	32/-	23/-	15/- (15 Years' Wear).
A	28/-	20/-	12/6 (10).

Rustless Cutlery—Desserts, from 14/-; Tables, from 18/- doz.

5, Great Western Arcade, Birmingham.



Good Health!

GOOD FOOD AND
FRESH AIR.

is the secret of good health.
There's no better food than

"WACADEN" MILK

Delivered daily throughout the
whole of Greater Birmingham
by:

WATHES, CATTELL & GURDEN, LTD.,
Holloway Head, Birmingham.

BRITANNIC ASSURANCE Co. Ltd.

(Established 1866)

Life, House Purchase,
Fire, Accident, Motor,
Employers' Liability,
etc.

BROAD STREET CORNER, BIRMINGHAM.
Tel. Mid. 4343.

LADIES : go to BENSLY & BORE

For EVERYTHING IN TEXTILES.

Coat Cloths, Dress Fabrics, Ladies' Suitings, Silks and
Artificial Silks. Lingerie Materials in the Celanese and
other makes, etc., etc.

There is no such value or variety elsewhere.

THE CLOTH AND SILK WAREHOUSE,
8 and 9, BULL STREET, CITY.

Get
Prestage

service
with
your



Showrooms : SUFFOLK ST.

Service and Spares Entrance :
ELLIS STREET, BIRMINGHAM

CITY OF BIRMINGHAM ORCHESTRA.

Next Season's Sunday Concerts will be
held at the West End Cinema.

October to end of March. Popular Prices.

CANNON HILL PARK.

Saturday Evening, June 7, at 7 p.m.

1. MARCH— "Pomp and Circumstance," No. 4 ELGAR
2. FLEMISH DANCE, No. 4 DEBUSSY
3. OVERTURE— "Die Felsenkühle" REINOLD

From 7-30 to 8-30 the Programme will be
Broadcast.

4. MARCH— "Militaire" SCHUBERT
5. OVERTURE— "Egmont" BEETHOVEN
6. AIR AND VARIATIONS—
"Surprise Symphony" HAYDN

7. THREE PIECES—
a. "Vorspiel" FAURÉ
b. Cornet Solo— "Solveig's
Song" P.C. COOK
c. "Symphonic Dance," No. 3

8. SELECTION— "Carmen" BIZET

9. SPANISH WALTZ— "Toreador" TRANSLUCENT

10. MARCH— "Slav" TCHAIKOVSKY

11. PRELUDE to Act III "Lohengrin" WAGNER

GOD SAVE THE KING.

Hear the best music and the
greatest artists in the Comfort
of your home on a

"HIS MASTER'S
VOICE"

Gramophone.



ALL MODELS IN STOCK
FROM £6 CASH.

Terms from 10/- deposit and 10/-
monthly.

Every record in stock.

Private Audition Rooms for con-
venience of visitors.

CALL OR WRITE FOR
CATALOGUES.

Open until 9 p.m. Saturdays.

Saffell & Martin, Ltd.

118, DALE END
(Bull Street Corner),
BIRMINGHAM.

Telephone : Central 1401.

GREAT WESTERN RAILWAY.

Ordinary Fares and Train Services between

BIRMINGHAM (Snow Hill) and **LONDON** (Paddington)

FARES : 1st Single... 23/2 1st Return... 46/4 3rd Single... 13/11 3rd Return... 27/10

WEEKDAYS.												SUNDAYS					
		A		R		R		R		R		G		R		R	
		A.M.	A.M.	A.M.	A.M.	A.M.	A.M.	P.M.	P.M.	P.M.	P.M.	P.M.	NIGHT	A.M.	P.M.	P.M.	P.M.
LONDON (Paddington)...	dep.	1.30	5.30	6.30	9.10	9.45	11.10	2.10	4.10	6.10	7.10	7.40	12.10	10.10	1.10	4.10	6.10
BIRMINGHAM (S.H.)...	arr.	3.58	10.40	10.28	11.10	12.50	1.10	4.10	6.10	8.10	9.10	10.36	3.42	1.20	3.20	7.27	8.10
		R		R		R		R		R		R		R		R	
		A.M.	A.M.	A.M.	A.M.	A.M.	A.M.	P.M.	P.M.	P.M.	P.M.	P.M.	NIGHT	A.M.	P.M.	P.M.	P.M.
BIRMINGHAM (S.H.)...	dep.	7.30	..	9.0	..	10.0	12.0	3.0	4.0	6.0	7.50	12.0	11.40	..	2.30	6.30	8.20
LONDON (Paddington)...	arr.	10.0	..	11.0	..	12.5	2.0	5.5	6.0	8.5	10.5	4.10	1.40	..	6.20	9.0	11.10

A—Sat. nights and Sun. mornings excepted. G—Sat. nights and early Sun. mornings excepted. R—Restaurant Car Trains. 1—Arrives 12 mins. later on Mon. 2—p.m.

Why not have your Holidays IN THE CHANNEL ISLANDS THIS YEAR?

Mrs. P. LAMBON
(Late of Birmingham),
1, LES TERRES,
GUERNSEY.

Personal Enquiries:
Mr. N. LAMBON,
BUSH COTTAGE,
CHESTER ROAD,
NEW OSCOTT.

Board Residence, from 6/- a day.

"VEG-U-MUS"

THE PROVED ALL-ROUND MANURE FOR
GARDENS AND ALLOTMENTS.

PRICES, delivered in the city. Cash with order.

Deliveries weekly.

28 lbs.	3/6	56 lbs.	5/6
1 cwt.	9/-	2—9 cwt.	8/6 cwt.
10—19 cwt.	8/- cwt.	Ton lots	£6 10s.

Apply to

SALVAGE DEPARTMENT, 161, Corporation St., Birmingham.

Do . . .

WORMINGTON'S

MAKE YOUR SHIRTS?

IF NOT,

give a call at

61-65, WORCESTER ST.

where they will convince
you of the advantages.

RE PRICE,
QUALITY and FIT,
offered by them.



NO EXTRA CHARGE
MADE FOR SHIRTS
TO MEASURE.

CITY OF BIRMINGHAM ORCHESTRA.

NEXT SEASON'S SYMPHONY CONCERTS
Thursdays, Oct. 9, 30, Nov. 20,
Dec. 4, Jan. 22, Feb. 12, Mar. 5, 26.

For further particulars see future announcements.

HANDSWORTH PARK.

Sunday Afternoon, June 8, at 3 p.m.

1. MARCH—"Le Prophete" HAYDN
2. OVERTURE—"Raymond" THOMAS
3. TWO PIECES—
(a) "Under the Lime Tree" CLARINET: P. S. JAMES,
SAXOPHONE: P. C. SANBY, HAYDN
(b) "The Wine Shop" GERSHWIN
4. SELECTION—"Merric England," No. 1 GERSHWIN

INTERVAL.

5. SUITE—"Folk Song Suite" VAUGHAN WILLIAMS
(a) "Swanton's Song" SANDER
(b) "My Jimmy Boy"
(c) "Folk Songs from Somerset"
6. CORNET SOLO—"Parted" TONY
P. C. WRIGHT.
7. WALTZ—"Eugene Onegin" TCHAIKOVSKY
8. OVERTURE—"Marmadella" FUCHS

GOD SAVE THE KING

SINGLETON

AND COLE

LIMITED

The

*Wholesale
Tobacconists*

CANNON STREET,
BIRMINGHAM.



"Fifty Years' Reputation
for straight dealing."

The Hudson Studios, Limited,

Birmingham's Premier Photographers.

FOR DISTINCTIVE PORTRAITURE VISIT OUR STUDIOS
IN THE
GREAT WESTERN ARCADE.

In our Galleries we have always a choice
selection of Modern Etchings, Woodcuts,
Water-colour Drawings, and Artistic
Gifts for every occasion.

We specialize in the Framing of Pictures
and the Regilding and Renovating of Old
Frames.

Phone: Central 7039.

2/6 a week from your pay envelope buys a B.S.A. Bicycle

After an initial deposit of 10/- the small sum of half-a-crown a week will make you the proud owner of the finest bicycle in the world—a machine with 70 years' reputation for high-class craftsmanship behind it—a B.S.A. Features of B.S.A. Bicycles include: Forged Steel B.S.A. Rear Hub; B.S.A. Chain Wheel (double flanged), with gear-cut teeth; B.S.A. Cranks made from carbon steel forgings; heavy gauge spokes; Brooks Saddle, etc. Remember only 2/6 a week, and you pay it direct to your local B.S.A. dealer. Write NOW for the B.S.A. catalogue to—
B.S.A. CYCLES LTD., 125, Small Heath, Birmingham.



LITTLE THINGS THAT GROW ON ONE.

CORNS! CORNS! CORNS!

Cured in Three days with Care and Certainty by using

**DR. CLARE'S
Magic Corn Silk**

9d. and 1/3 per packet.

All Branches of
HEDGES
(Chemists), Ltd.

Head Office
10-12, Dale End, Birmingham.

CITY OF BIRMINGHAM ORCHESTRA.

Next Season's Sunday Concerts will be held at the West End Cinema.

October to end of March. Popular Prices.

HANDSWORTH PARK.

Sunday Evening, June 8, at 7 p.m.

1. MARCH "The Union's Call" TRENKLE

2. OVERTURE "Mirella" TRENKLE

3. THREE DANCES from "The Bartered Bride" SMOLKA

4. SELECTION "Chu Chin Chow" NORTON

INTERVAL.

5. BALLET MUSIC "William Tell" ROSSINI

6. CORNET SOLO "The Lord Chord" SULLIVAN
P.C. COOK.

7. WALTZ "Gold and Silver" LEHAR

8. SELECTION "Tom Jones" TRENKLE

GOD SAVE THE KING.

Make the most of Happy Summer Days with a Motor Cycle!

"Premier" have "The Pick of the Best," and offer the finest organization. Easy Deferred Payments to suit yourself; quick delivery; large stock of spares; expert repairs; exchanges; and unequalled service on all Motor Cycling matters.

Good idea! See "Premier" to-day and turn contemplation into realization.

PREMIER MOTOR CO.,
Aston Road, Birmingham.

BIRMINGHAM & LONDON

(NEW STREET)

(EUSTON)

EXPRESS TRAINS AND RESTAURANT CAR SERVICES

By LMS

"THE BEST WAY."

WEEKDAYS.												SUNDAYS.											
R						R						R						R					
a.m.						a.m.						a.m.						a.m.					
p.m.						p.m.						p.m.						p.m.					
BIRMINGHAM (N.S.)						LONDON (Euston)						BIRMINGHAM (N.S.)						LONDON (Euston)					
7.30						8.10						8.35						9.15					
8.40						9.12						9.55						10.30					
9.45						10.12						10.40						11.15					
10.45						11.45						12.15						1.00					
11.30						12.26						1.45						2.30					
1.00						2.00						2.25						3.10					
2.35						3.00						3.25						4.10					
4.50						5.15						5.40						6.25					
6.20						7.25						8.20						9.15					
7.50						8.20						9.10						10.00					
12.15						4.20						4.20						5.10					

WEEKDAYS.												SUNDAYS.											
R						R						R						R					
a.m.						a.m.						a.m.						a.m.					
p.m.						p.m.						p.m.						p.m.					
LONDON (Euston)						BIRMINGHAM (N.S.)						LONDON (Euston)						BIRMINGHAM (N.S.)					
2.50						3.45						4.30						5.15					
4.45						5.30						6.15						7.00					
6.45						7.30						8.15						9.00					
8.45						9.30						10.15						11.00					
10.30						11.15						12.00						1.00					
12.15						1.00						1.45						2.30					
2.00						2.45						3.30						4.15					
3.00						3.55						4.40						5.25					
4.30						5.25						6.10						6.55					
5.15						6.10						6.55						7.40					
6.00						6.55						7.40						8.25					
6.45						7.40						8.25						9.10					
7.30						8.25						9.10						9.55					
8.15						9.10						9.55						10.40					
9.00						9.55						10.40						11.25					
9.45						10.40						11.25						12.10					
10.30						11.25						12.10						1.00					
11.15						12.10						1.00						1.45					
12.00						1.00						1.45						2.30					

ORDINARY AND WEEK-END FARES: 1st Class Single 2s 2d, 1st Class Return 4s 4d, 2nd Class Single 1s 11d, 2nd Class Return 2s 7d, 3rd Class Single 1s 11d, 3rd Class Return 2s 7d. WEEK-END: 1st Class Return 3s 1d, 2nd Class Return 1s 9d, 3rd Class Return 1s 9d.



For really good cooking with a minimum of labour— USE A MODERN GAS COOKER

Full particulars will gladly be supplied on application to
THE CITY OF BIRMINGHAM GAS DEPARTMENT.
Head Office: EDMUND STREET. Branches: ACOCK'S GREEN, ERDINGTON,
HARBORNE, KING'S NORTON, SUTTON COLDFIELD, and WEDNESBURY.

WILSON'S "TIPPY" TEA



"FAMILY" SELF-RAISING FLOUR

John Wilson & Sons (B'ham),
Ltd.,
Well Street.

CITY OF BIRMINGHAM ORCHESTRA.

NEXT SEASON'S SYMPHONY CONCERTS
Thursdays, Oct. 9, 30, Nov. 20,
Dec. 4, Jan. 22, Feb. 12, Mar. 5, 26.

For further particulars see future announcements.

WHIT-MONDAY
JUNE 9th



Birmingham City POLICE SPORTS at VILLA PARK



The People's Bank

INTEREST - $3\frac{1}{2}\%$
SECURITY - 100%

DEPOSITORS' BALANCES
OVER £11,500,000.

312,000 OPEN ACCOUNTS.

51 BRANCHES IN THE CITY.

LET



DRESS YOU

21, HIGH STREET, BIRMINGHAM,
80-86, CORPORATION STREET, BIRMINGHAM,
70, HIGH STREET, BIRMINGHAM,
202-204, SOHO ROAD, HANDSWORTH, BIRMINGHAM.

GITTINGS & HILLS, Ltd.

TOWER VARNISH WORKS,
NECHELLS.

Paints, Varnishes, Enamels of all Sorts
for Decorators and Painters.



LASTOLINE, the DURABLE Snow-White Enamel. CRESTA
for Inside Work. Front Door Varnish of Splendid Quality.
Muvfast, the Paint Remover, will fetch off Stoved Enamels.

Write for List and Samples.

DRINK B. C. S. BOTTLED MILK

(Pasteurised)

Sold in Pint Bottles at the same price as loose Milk. Guaranteed free from all injurious germs.

Send P.C. asking Deliverer to call.

BIRMINGHAM CO-OPERATIVE SOCIETY, LTD.
Dairy Dept., Vauxhall Road, Birmingham.
DIVIDEND 1/2 in the £.

J. GILMAN & SON, LTD.

FOR ...

**CASE-HARDENING
COMPOUNDS ::**

BIRMINGHAM

FOR FURNITURE

CARPETS, LINO., WRINGERS,
Etc.,

The Direct Furnishing Co.,
283, Soho Road, Handsworth

Head Office and Works:

45 and 47, Long Acre, Nechells,
Birmingham.

C. V. Hollidge and H. Daniels,
Proprietors.

Furnish out of Income.

Call at either address, you will then
be satisfied that the Quality and Terms
we can offer you will give you every
satisfaction.

Liberal Discount for Cash.

All Goods manufactured in
Birmingham.

You save the Shopkeepers' profit,
and, most important, you have a
Maker's Guarantee.

Terms arranged to suit your Pocket.

Bedroom Suites from £10 to £50
Chesterfield Suites from £8 to £50

No other firm trading on extended
terms can give you a manufacturer's
service.

VICTORIA PARK, SMALL HEATH.

Tuesday Evening, June 10, at 7 p.m.

1. MARCH—"Solemnity" F. CHAPMAN
2. OVERTURE—"The Magic Flute" MOZART
3. TWO DANCES:
a) Gavotte—"Mignon" THOMAS
b) "Farandole" BIZET
4. SELECTION—"Aida" VERDI
- INTERVAL.
5. SUITE in F major HALLÉ
a) March
b) Elfenreue
c) Song of the Blacksmith
d) Fantasia on the Dargason
6. CORNET SOLO—"Love's Garden of Roses" HAYDN WOOD
P.C. COOK
7. SUITE DE VALSES CHARRIER
8. SELECTION—"Tutu" SULLIVAN
GOD SAVE THE KING

HANDSWORTH PARK.

Wednesday Evening, June 11, at 7 p.m.

1. MARCH—"Crown of Chivalry" FLETCHER
2. OVERTURE—"La Chasse du Jeune Henri" BIZET
3. SYMPHONIC MOVEMENT—"Finale" SYMPHONY No. 4 SCHUMANN
4. SELECTION—"I Pagliacci" LEONCAVALLO
- INTERVAL.
5. OVERTURE—"Zampa" HEROLD
6. IRISH REEL—"Molly on the Shore" GRADYER
GODFREY
7. WALTZ—"Braganza" LIGHT
8. HUNGARIAN RHAPSODY, No. 2 LIGHT
GOD SAVE THE KING

FISH POULTRY and GAME

Everything of the best
at lowest prices.

SAWERS LIMITED,

83 and 84, Bull Street,
Birmingham,
Telephone: Cent. 7041.
AND

Five Ways, Edgbaston
Telephone: Edgbaston 1881

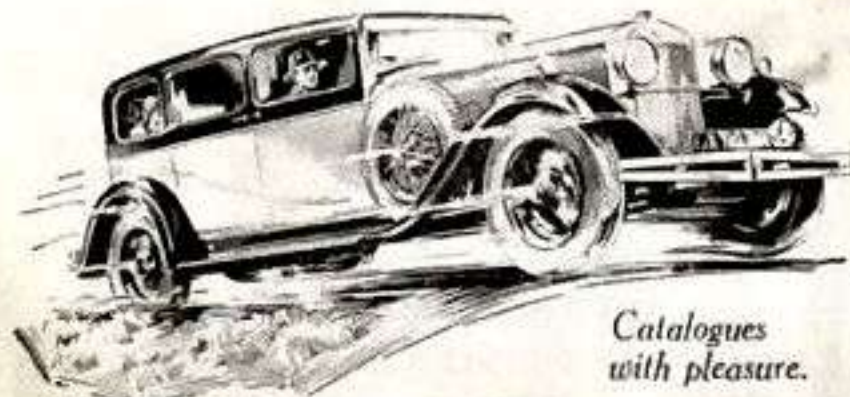
24, The Parade,
Sutton Coldfield

64, Regent Street,
Leamington Spa

23, Church Street, Warwick

16, Bridge Street,
Stratford-on-Avon

Also at Glasgow, Belfast, etc.



Catalogues
with pleasure.

The Cars of the Year.

WOLSELEY

An unrivalled range of Quality
Cars for every purse and purpose.

WOLSELEY MOTORS (1927) LTD., Ward End, Birmingham.

(Governing Director, Sir WILLIAM R. MORRIS, Bt.)



BOYNTON'S FOR WIRELESS

WIRELESS SETS ON EASY TERMS.

Your Pick of the Best from 13/- per month.

Radio-Gramophones, Portable Sets, All-Mains Sets, and Loud Speakers of the following well-known reputed manufacturers:

PYE, KOLSTER-BRANDES, AMPLION, PHILIPS, MARCONI, EKCO, BROWNIE.

YOU SAVE POUNDS AT BOYNTON'S,

139, CORPORATION STREET :: 65, 66, 73, STAFFORD STREET

(Opposite Grand Theatre.)

(Off Corporation Street) (Wholesale Depot.)

Telephone: Central 1591 (Private Branch Exchange).

**YOUR
LOCAL
DEALER
sells
and
recommends
DUNLOP
TYRES
and
ACCESSORIES**



DUNLOP RUBBER CO. LTD.,
Fort Dunlop, Birmingham.
Branches throughout the World.

C.F.H. 729

*Phone: 1554-1558 Central.
**Pickfords Furniture Storage and
Removal Service.**

Any Quantity. Any Distance. Estimates Free.
Over 100 Branches Home and Abroad.

137, Corporation Street, Birmingham.

WARD END PARK.

Thursday Evening, June 12, at 7 p.m.

1. MARCH—"L'Entrée Cardinale" *Allegro*
2. OVERTURE—"The Wanderer's Goal" *Serenely*
3. THREE DANCES from "Nell Gwyn" *Gaiety*
4. SELECTION—"Carmen" *Dramatic*

INTERVAL.

5. OVERTURE—"Le Roi d'Yvetot" *Allegro*
6. CORNET SOLO—"Am Meer" *Serenely*
P.C. COOK.
7. WALTZ—"Wood Nymphs" *Brisk & Gay*
8. SUITE—"Rustle Reels"
(a) "Dance on the Green."
(b) "At Quality Court."
(c) "All the Fun of the Fair."

GOD SAVE THE KING.



Is this
Year's
Mowing
uphill work?

Do you anticipate another season's backache pushing a bundle of old iron miscalled a mower? NOW is the time to alter all this—send your machine to us, who are Lawn Mower Repair Specialists of many years' experience. All machines—horse, hand, or motor. No machine leaves us till thoroughly overhauled.

We collect and deliver free and quote before overhauling. Just a P.C., or telephone, to our Repair Department. "Send for Mower" will do. Quote Dept. 253. Large stocks of all makers' fittings kept.

**Parker, Winder and Achurch,
LTD.,
BROAD STREET, BIRMINGHAM.**
Telephone: Midland 5601.

**P.W.A. LAWN MOWER
REPAIRS**

B HAM'S **C** REAM
EST OF
READ CONFECTIONERY

**WIMBUSH
AND WORTH WHILE**

50 Branches.

Many Agents.

BUY

Kunzle

**CHOCOLATES
AND CAKES**

Cafes: UNION STREET :: MIDLAND ARCADE
PARADISE ST. :: FIVE WAYS

ALL **Kunzle** CAKES are made with
PURE DAIRY BUTTER & EGGS.
No margarine or substitute used.

SHOP at LEWIS'S

for the greatest values at the lowest prices. Everything to wear for all the family ; things to use, and all home requirements, including furniture, the greatest choice and the most satisfaction for all.

There is always something new at Lewis's, something of popular attraction, and you can lunch or take tea in either of the beautiful Restaurants, where food is good and service attentive.

LEWIS'S LTD.

Good Sense is Common Sense
well applied when you buy a

"Bill" Briar Pipe
1/- each

because it is the finest value in Pipes. Trade enquiries to

H. SHELDON & SONS,
Great Lister Street, Birmingham.
Telephone : Aston Cross 2565-6.

Everything for the Tobacco Trade.

Clapshaw & Cleave

Manufacturers of LTD.
Cricket, Tennis and Bowls
requisites of every description

11-13, Edmund St., Birmingham
Telephone : 5935 Midland

Telephone : Aston Cross 2158. Est. 1853

N. BUDD & SON,
MARQUEES, TENTS & TARPULIN
MANUFACTURERS.

Window Blinds for Shops, etc.
Temporary Ball Rooms, Flags,
Parquet Floors, etc. (Sale or Hire.)
265, ASTON ROAD, BIRMINGHAM.

**All GREAT WESTERN
AND
LONDON MIDLAND &
SCOTTISH RAILWAY**
TICKETS BOOKED IN ADVANCE AT
PICKFORDS

(Opposite Grand Theatre)

137, CORPORATION ST., BIRMINGHAM,

or Local Branches :

105, ALUM ROCK ROAD, SALTLEY,

573, MOSELEY ROAD

(Opposite Brighton Road),

13, HIGH STREET, ERDINGTON.

Arrangements made for :

CONTINENTAL TOURS,
PLEASURE CRUISES,
STEAMSHIP TICKETS,
POLYTECHNIC TOURS,
TRAVEL EVERYWHERE,
PASSPORTS OBTAINED.

G.W. and L.M.S. Official Agents for Picnic
Parties, Annual Outings, Etc. No Booking
Fees.

Over 100 Branches. Home and Abroad.
Phones : 1554-1558 Central.

Telephone : Midland 5634.

V. PONTONE,
CREAM ICE SPECIALIST.

Manufactory : 57, Park Street, Birmingham.

Supplies all the principal Theatres and Cinemas in
the City. :: Originator of Hygienic Carton
Wrappers with the Black Seal.

Sign of

Craftsmanship

CIVIL &
BOOT-
MAKERS
Hand-sewn
Work

41, ASTON
STREET



MILITARY
and RE-
PAIRERS
a
Speciality

B'HAM

Prescriptions Dispensed by Fully Qualified Chemists only.

T. & W. & W. SOUTHALL LIMITED,
Chemists, 17, BULL ST., BIRMINGHAM.

Tel. No. Cent. 0206. Telegrams : "Galenical, B'ham."

For Dispensing, Medicinal Preparations, Diabetic Foods, Surgical Appliances, Belts,
Elastic Hosiery, Invalid Furniture, and all Southalls' Sanitary Specialities.
Oxygen always in stock and can be had immediately.

SPECIAL DEPARTMENT AND FITTING ROOM FOR LADIES.

RUBBER STAMPS

EMBOSSING PRESSES
LINEN MARKING OUTFITS, etc.

JOHN BERKLEY, Ltd.,
(Est. 1877)

8, Livery Street, Birmingham
Tel. Cent. 6324.

**WIRE YOUR HOUSE FOR ELECTRICITY
ON EASY PAYMENT TERMS**

Call for Advice and Demonstrations at :

**CORPORATION SHOW ROOMS,
21, PARADISE STREET, BIRMINGHAM,
1, STATION ROAD, SOLIHULL.**